



Iowa CREP News

Issue #4 - December 14, 2009



Ground-breaking at Kossuth Co. Site

Iowa CREP Summer Site Tour: The CREP team in cooperation with local Soil and Water Conservation Districts and FSA County Staff hosted 8 summer construction site ceremonies throughout the 37 county CREP area. These events showcased the latest CREP sites to be built and recognized the leadership of landowners and local conservation staff/offices. The program received great press from the local media, even getting video coverage from KIMT of Mason City to cover the Floyd County event. These events wouldn't have been a great success without the help of our partners in the field offices. Thanks for all your help and support!



Iowa Dept. of Agriculture and
Land Stewardship
Division of Soil Conservation
Wallace State Office Building
Des Moines, IA 50319

Phone: 515-281-6146
Fax: 515-281-6170



Charlie's Re-Retirement: Charlie Kiepe has retired from his work as CREP Field Specialist (CFS) with the [Iowa Drainage District Association](#). Charlie has been working on developing sites through landowner contacts for CREP since the start of the program and most recently covered Floyd, Butler, Grundy, Hardin, and Franklin Counties. Charlie and his wife, Jo, have moved back to Missouri, where they built a house near his boyhood home. Charlie has worked on over half of the 48 wetlands that have been restored to date, numerous sites still under development, and helped in training new field specialists. Charlie deserves a lot of credit for the success of the Iowa CREP. We couldn't have done it without you, Charlie.

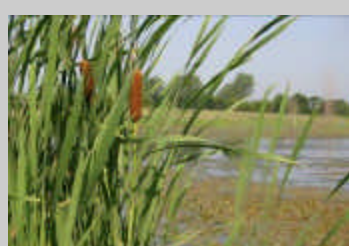
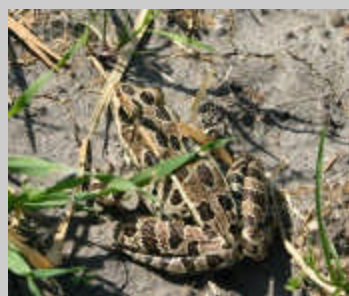
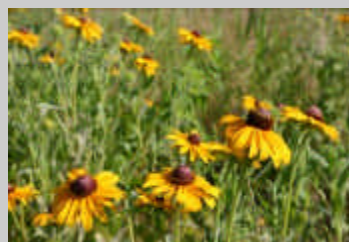
CREP Site Toured by Hypoxia Task

Force: For the first time since the Hypoxia Task Force was established 10 years ago, the Task Force met in Iowa to "see agriculture." The [Mississippi River/Gulf of Mexico Watershed Nutrient Task Force](#)

is composed of 6 federal and 10 state agency representatives located within the Mississippi River Basin. About 150 attendees from various organizations attended the tour with the Task Force. A special edition newsletter is in the works to provide more information about IDALS's efforts to improve water quality in Iowa and reduce hypoxia in the Gulf of Mexico.



Group picture at CREP site in Story County.



CREP Highlighted on IPTV program, Iowa Journal: The IPTV program highlighted innovative practices by various group's to improve water quality by reducing nutrient transport from farm fields. Video can be seen at the [IPTV website](#).

New CREP Site Signs: To further recognize cooperation with landowners and showcase existing projects, we're installing signs at each of the sites. Signs are on new site locations where feasible and with landowners permission. Existing sites will have signs installed at the request of landowners. Please be sure to request permission from the landowner before accessing private property and any of these CREP sites.



LICA CREP Site Ceremony and Midwest

Expo & Field Day: The Iowa CREP partnered with the [Iowa Chapter of the Land Improvement Contractors of America \(LICA\)](#) in the restoration of a CREP wetland on LICA's property in Marshall County. The construction of the site coincided with LICA's Midwest Construction Expo and Field Day last July.

It was a great turnout with over 1,000 people in attendance over the 2 day event. Many folks from around the nation came to see construction activities involving more than 80 pieces of equipment valued at more than \$20 million dollars.

Those in attendance were able to view and even participate in various aspects of the wetland's construction among other activities. "This is a great opportunity to partner with LICA to help educate their members on all phases of CREP wetland construction." said Dean Lemke, Water Resources Bureau Chief, IDALS-DSC.

Iowa Secretary of Agriculture, Bill Northey, attended and addressed the crowd. "We hope that projects like this lead to hundreds and hundreds of other projects around the state," he said. He was even able to try out operation of some of the equipment.

LICA CREP Site stats:
Drainage Area = 847 acres
Perm. Pool = ~4 1/4 acres
Easement Area = ~20 acres
Nitrate Removal (lifetime) = 300+ tons

The following page includes pictures before, during, and after the LICA Field Day.

LICA CREP Site Photo Gallery

Before Photo



Photos during LICA Field Day



Photos after construction

